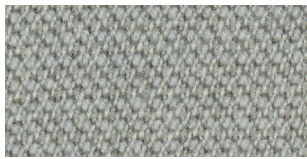


CAPTURE

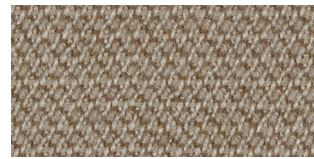
by Gabriel



3305



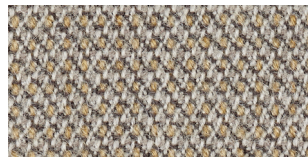
3301



6101



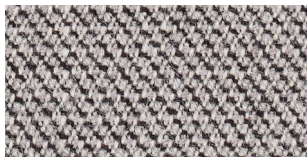
3306



5103



3201



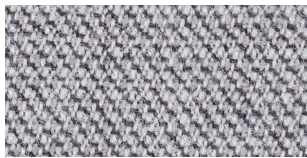
4001



4101



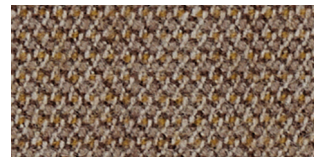
3401



4102



4401



6201



4601



4201



3101



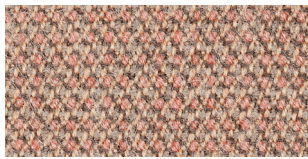
5501



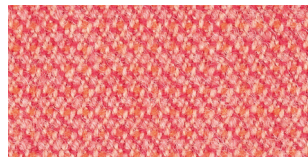
6301



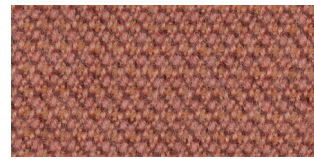
3501



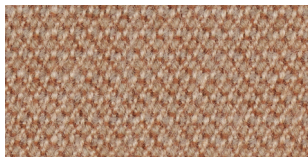
4803



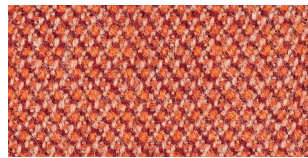
4802



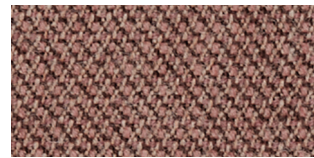
3601



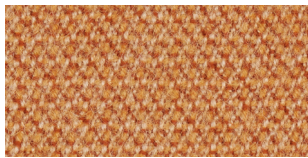
3202



4301



7201



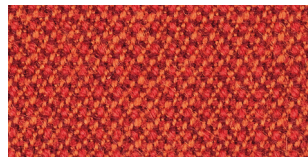
3001



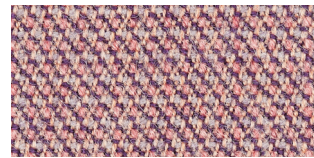
7401



3002



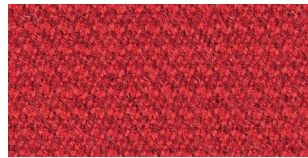
4702



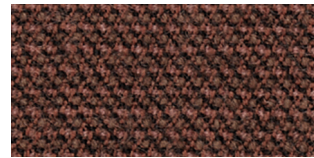
4801



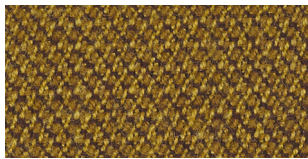
6801



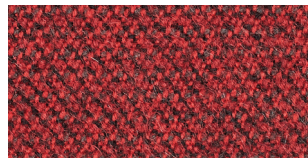
5401



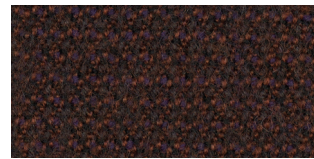
7301



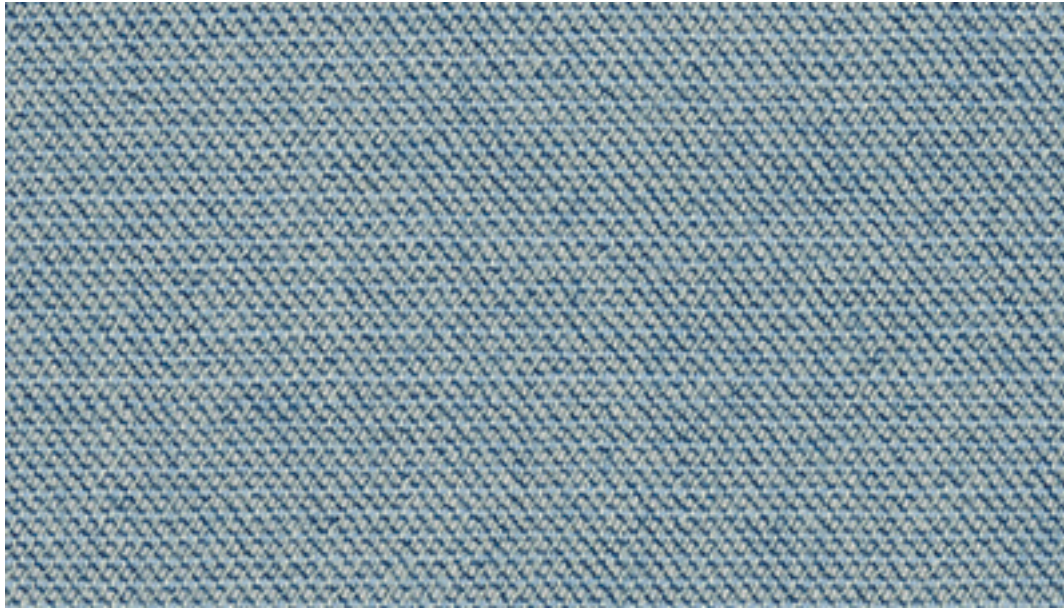
6401



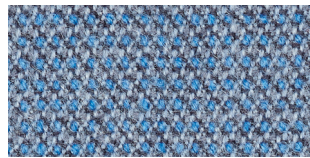
5402



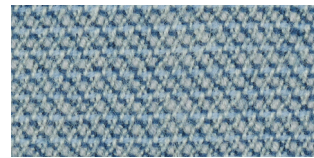
3701



3302



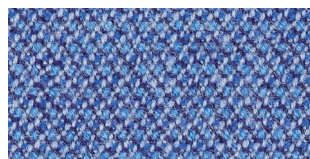
4902



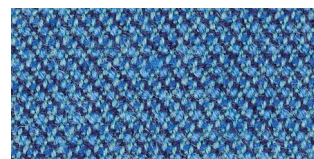
3302



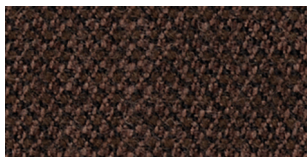
3402



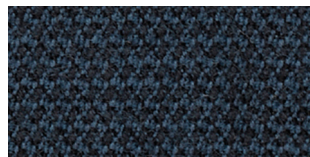
4901



5002



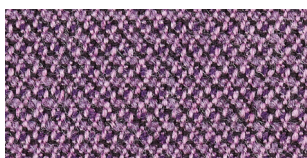
6901



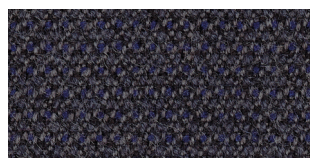
6001



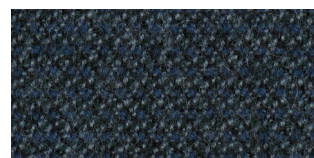
6602



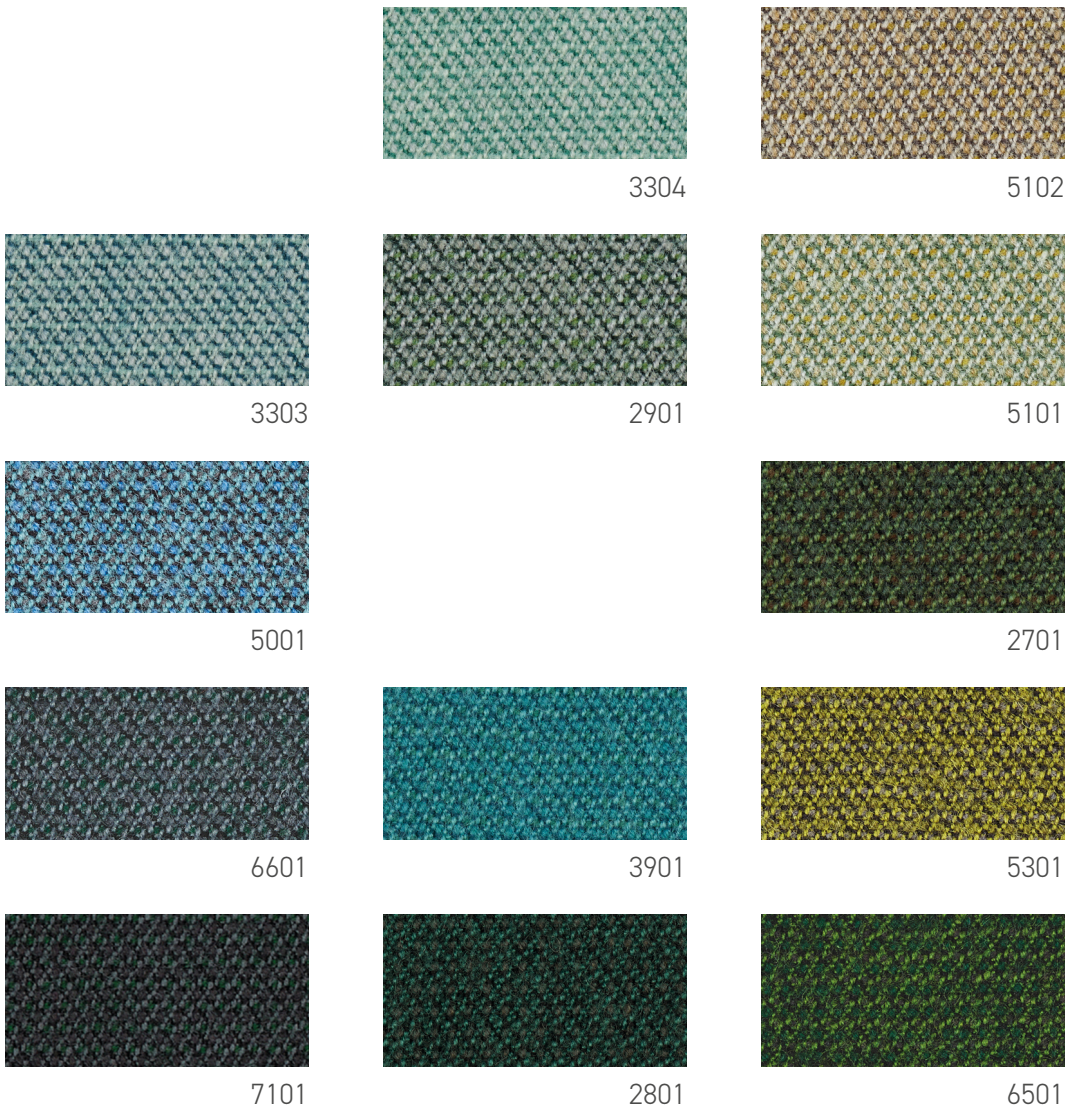
4501



5201



3801



CAPTURE

Specifications: www.gabriel.dk

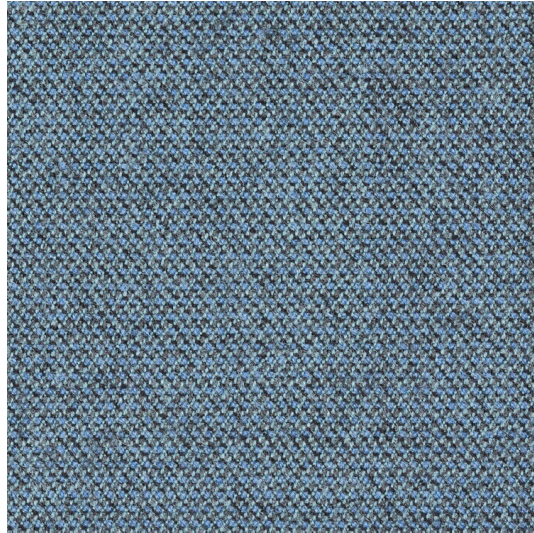
Please be aware that the PDF colour shades can appear different from the real fabric colours.
We advise you to request actual fabric samples before ordering.



CAPTURE

COLOUR 2472-5001

Please be aware that the colour shades can appear different from the real fabric colours. We advise you to request actual fabric samples before ordering.



COLOUR SCALE

Design no. 2472 Capture (140 cm/55") is available in 59 colours



Capture is a lightly felted, multi-coloured wool upholstery fabric, fusing light and dark colours to create a refined, yet lively, melange pattern and an inviting, positive vibe. It offers a beautifully rugged texture that gives the fabric a handcrafted, organic feel and creates a comfortable tactility.

Meets Möbelfakta requirements

Design and colours are developed by Cenk Kivrikoglu



PRODUCT SPECIFICATIONS

CHARACTERISTICS

Design no.

2472 – Capture

Application

Upholstery

Composition

85% New Zealand wool, 15% Polyamide

Weight

475 g/lm – 15.32 oz/lin.yd

Width

140 cm – 55 inches

PERFORMANCE

Abrasion

200,000 – rubs martindale (EN ISO 12947-2)

200,000 – rubs martindale (ASTM D4966) (heavy duty upholstery)

Pilling

4-5 – scale 1-5, max. 5 (EN ISO 12945-2)

Light fastness


5-7 – scale 1-8, max. 8 (EN ISO 105-B02)

Rubbing fastness dry/wet

4-5/4-5 – scale 1-5, max. 5 (EN ISO 105x12)

US ACT

Pass

-  [AATCC 8 or 116 Dry/wet crocking](#)
-  [ASTM D4966 Martindale \(heavy duty\)](#)
-  [ASTM D4970 Pilling](#)
-  [AATCC 16 Light fastness](#)
-  [CA TB 117-2013](#)
-  [ASTM E 84 Class 1\(Unadhered\)](#)

Abrasion test results exceeding ACT Performance Guidelines are not an indicator of product lifespan

FLAMMABILITY

Certificates

- [BS EN 1021 1&2 Cigarette and Match](#)
- [BS 5852 Part 1 0,1 Cigarette & Match, The Furniture and Furnishing Regulations 1988](#)
- [Class Uno UNI 9175 Class 1 I EMME](#)
- [CA TB 117-2013](#)
- [ASTM E 84 Class 1\(Unadhered\)](#)
- [BS 5852 Crib 5 \(option flame retardant\)](#)
- [IMO MSC 307\(88\) Annex 1 part 8](#)
- [IMO MSC 307\(88\) Annex 1 part 8 UK](#)
- [MED Certificate IMO](#)
- [MED Certificate IMO UK](#)

Will also pass other flammability standards. Flame retardant performance is dependent upon the foam used. Contains no flame retardant chemicals.

CERTIFICATES

ACOUSTIC TEST AIR FLOW RESISTANCE

Test	Condition	No.	Date	Download
EN 29053 & ISO 9053-1 (airflow resistance)		M104146/40	04 Mar 2019	PDF

ABRASION RESISTANCE

Test	Condition	No.	Date	Download
BS EN ISO 12947-2/14465	In accordance with EN 14465	28511291	17 Feb 2021	PDF
ASTM D4966 Martindale (heavy duty)		244309089f 002	21 Apr 2021	PDF

PILLING

Test	Condition	No.	Date	Download
BS EN ISO 12945-2		28512159-A	01 Feb 2022	PDF



ACOUSTIC TEST AIR FLOW RESISTANCE

ASTM D4970 Pilling	21-006187	04 Jan 2022	PDF
--------------------	-----------	-------------	---------------------

COLOUR FASTNESS TO LIGHT

Test	Condition	No.	Date	Download
BS EN ISO 105 B02 Method 2		74379-01	16 May 2016	PDF
BS EN ISO 105 B02 Method 2		113859A	22 Jan 2020	PDF
BS EN ISO 105 B02 Method 2		2023AN0648	12 May 2023	PDF
AATCC 16 Light fastness		2023AN0648	12 May 2023	PDF

DRY AND WET RUBBING/CROCKING

Test	Condition	No.	Date	Download
BS EN ISO 105-X12 Rubbing dry/wet		2023AN1142	06 Jun 2023	PDF
AATCC 8 or 116 Dry/wet crocking		2023AN1142	06 Jun 2023	PDF

FLAMMABILITY

Test	Condition	No.	Date	Download
BS EN 1021 1&2 Cigarette and Match	20-22 kg/m3 non-fire retardant polyurethane foam	113783-02	06 Jan 2020	PDF
BS 5852 Part 1 0,1 Cigarette & Match, The Furniture and Furnishing Regulations 1988	20-22 kg/m3 non-fire retardant polyurethane foam	113783-01	06 Jan 2020	PDF
Class Uno UNI 9175 Class 1 I EMME		232536 / 1	30 May 2017	PDF
CA TB 117-2013		3-35681-2	07 Jan 2020	PDF
ASTM E 84 Class 1(Unadhered)	Unadhered	3-54183-0	22 Dec 2023	PDF
IMO EC Declaration of Conformity EU,UK			16 Jan 2025	PDF



ACOUSTIC TEST AIR FLOW RESISTANCE

IMO MSC 307(88) Annex 1 part 8	SH01671	09 Jan 2025	PDF
IMO MSC 307(88) Annex 1 part 8 UK	53163	09 Jan 2025	PDF
MED Certificate IMO	SH01685	07 Feb 2025	PDF
MED Certificate IMO UK	53166	07 Feb 2025	PDF

FLAMMABILITY WITH FLAMERETARDANT TREATMENT

Test	Condition	No.	Date	Download
BS 5852 Crib 5 (option flame retardant)	35 kg/m3 CMHR foam	23/62632C/09/23	11 Dec 2024	PDF

SEAM SLIPPAGE

Test	Condition	No.	Date	Download
BS EN ISO 13936-2		28510727	18 Feb 2020	PDF

VOC EMISSION

Test	Condition	No.	Date	Download
Ansi/Bifma VOC test M7.1		237145-C	13 Mar 2024	PDF

MATERIAL SAFETY DATA SHEET

Test	Condition	No.	Date	Download
Material Safety Data Sheet			30 Sep 2021	PDF

CARE & MAINTENANCE

Dry cleaning P(S)

